

PARTNER
WITH US

1

Please **PRAY** for the opening of Seminario Biblico Reformado in March of 2018--for the students, teachers and ministry partners.

2

Please **GIVE** towards the initial one-time expenses and our recurring expenses. There are two ways you can make one-time and/or recurring gifts:

➔ **ONLINE:** Credit Card or Bank Acct.
mtw.org/projects/arequipa-team

➔ **MAIL:** (Memo: Account #84791)
Mission to the World
PO Box 744165
Atlanta, GA 30374-4165

3

Please **SEND** individuals or teams to teach intensive courses, English classes, or to help with maintenance and construction.

OUR VISION

Seminario Biblico Reformado (Reformed Bible Seminary) exists to glorify God by providing discipleship opportunities in which a student may KNOW God by his Word and Spirit, LIVE in the identity as a child of God, and SERVE his church.

We believe a seminary has a greater responsibility than simply transferring information from teacher to student. SBR is striving to work alongside the local church in order to train and equip the future leaders of the church through knowledge, experience and service.

In Latin America in general, and Peru, in particular, Reformed and biblical teaching has been either inaccessible or unaffordable. SBR is establishing a central campus from which other discipleship centers may be planted in a reproducible and sustainable way. We are striving to make seminary-level education and training available to current and future church leadership.

PARTNERSHIP INFORMATION



SEMINARIO BIBLICO REFORMADO

MORE INFO

For more information, please visit SBR's website (Spanish) at www.SBRPeru.com or our team website at www.CrossCollaboration.org. Also, follow us on Facebook: facebook.com/SBRPeru



Scan the QR code to
donate from your mobile
device.

CONTACT US

Perú
Avenida Ejército, N° 1056, 3^{er} Piso
Cayma, Arequipa, Perú 04000

United States
SBR Arequipa-Peru
1600 North Brown Road
Lawrenceville, Georgia 30043

Email: Info@SBRPeru.com



www.SBRPeru.com

ONE-TIME EXPENSES

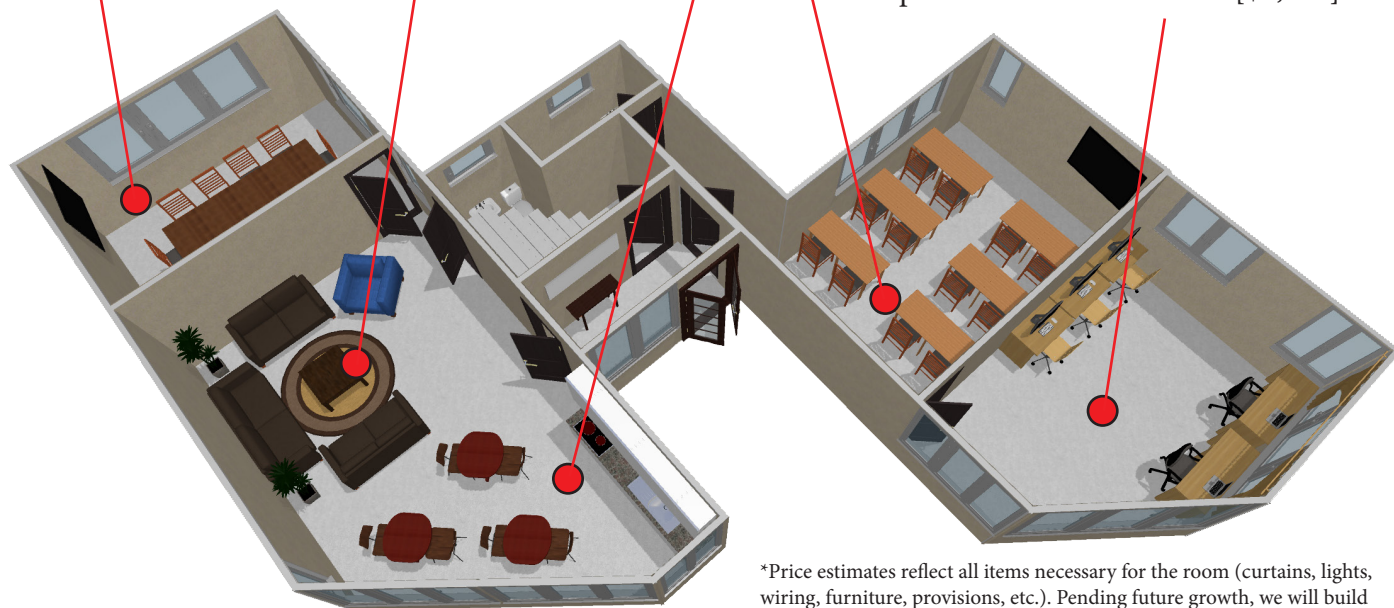
LIBRARY: Conference room, alternate classroom and library. [\$1,900]

THE LOUNGE: Room for small group meetings, ESL practice, and personal/Bible studies. [\$2,300]

CAFE: Kitchenette and cafe area for students to study and fellowship. [\$2,400]

CLASSROOM: Main classroom with modern media capabilities. [\$2,600]

OFFICES: Desks for Professors as well as computers for students to use. [\$4,800]



*Price estimates reflect all items necessary for the room (curtains, lights, wiring, furniture, provisions, etc.). Pending future growth, we will build small residential studio apartments on the fourth floor (roof).

RECURRING EXPENSES

➔ **STUDENT SPONSORSHIP:** Sustaining SBR's expenses will come mainly through Ministry Partners sponsoring a student. We offer three student tracks:

➔ **APPRENTICES:** Full-time students with practical ministry responsibilities and training. These students are seeking vocational ministry. **\$450/ month**

➔ **LOCAL STUDENTS:** Part-time local students who attend classes and serve in their local church. **\$50 / month**

➔ **VIRTUAL STUDENTS:** Part-time students who attend classes virtually from other areas of Peru and Latin America while in their local church. **\$20 / mo.**

➔ **MENTOR SPONSORSHIP:** Full-time Latin American colleagues will serve alongside us as professors, administrators, and church planters. **\$700 / month**

LOCAL IMPACT

- 1 **SEMINARY:** Bible and theology classes will be offered to the community as well as practical hands-on training.
- 2 **CHURCH PLANT:** Serving in a dual capacity, the facilities will be used to launch a new church plant.
- 3 **COMMUNITY CENTER:** Various community outreach activities will be offered (univ. study center, ESL, counseling, etc.)

NATIONAL IMPACT

- 1 **VIRTUAL CLASSES:** Classes can be offered all over Peru and Latin America in both on-line and off-line formats.
- 2 **DISCIPLESHIP CENTERS:** We will help church leaders establish local discipleship centers all over Peru using this platform.
- 3 **CHURCH PLANTING MOVEMENT:** Our hope is that a church planting movement would be ignited in Peru through SBR.

DID YOU KNOW?

Our curriculum has phases of production.

In **Phase 1**, which is already completed, we are able to offer a Certificate of Christian Ministry from **Birmingham Theological Seminary** to students who successfully complete the **Third Millennium Ministries** curriculum. **Phase 2** will incorporate classes offered by **Miami International Seminary**. In **Phase 3**, we will develop courses taught by Latin American nationals in order to have a balance of contextualized class offerings.



Birmingham Theological Seminary

